



# Marana, AZ

Community Profile

## People

The total population of Marana is 42,631. The median age is 38.61.

**42,631**

Total Population



**49.22%**

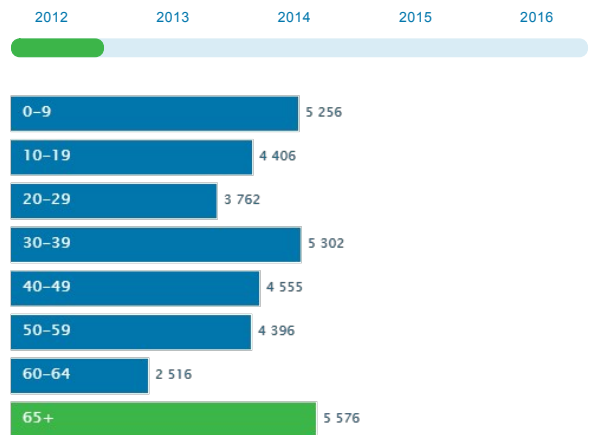
Male



**50.78%**

Female

### Age Distribution

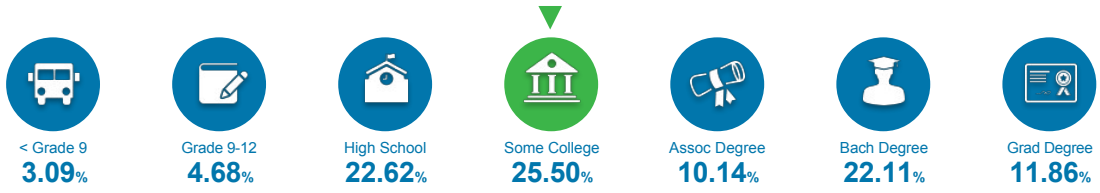


Median Age

**38.61**

## Educational Attainment

The majority of the population in Marana has completed at least some college, and 33.97% has a College Degree.



## Labor Force

Marana has a labor force of 21,347 people, with an unemployment rate of 3.90%.

21,347

Labor Force



3.90%

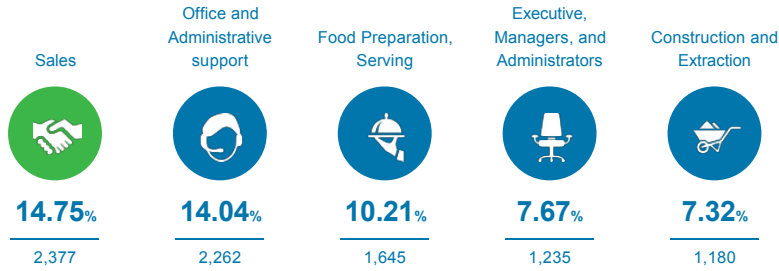
Unemployment Rate

▼-20.41%

Unemployment Rate Change (1 year)

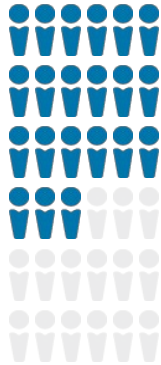
## Talent

Where are the top jobs by occupation?



Total Employees

11,262



The work distribution of total employees in Marana is:

43.00%

Blue Collar



56.00%

White Collar

Total Establishments

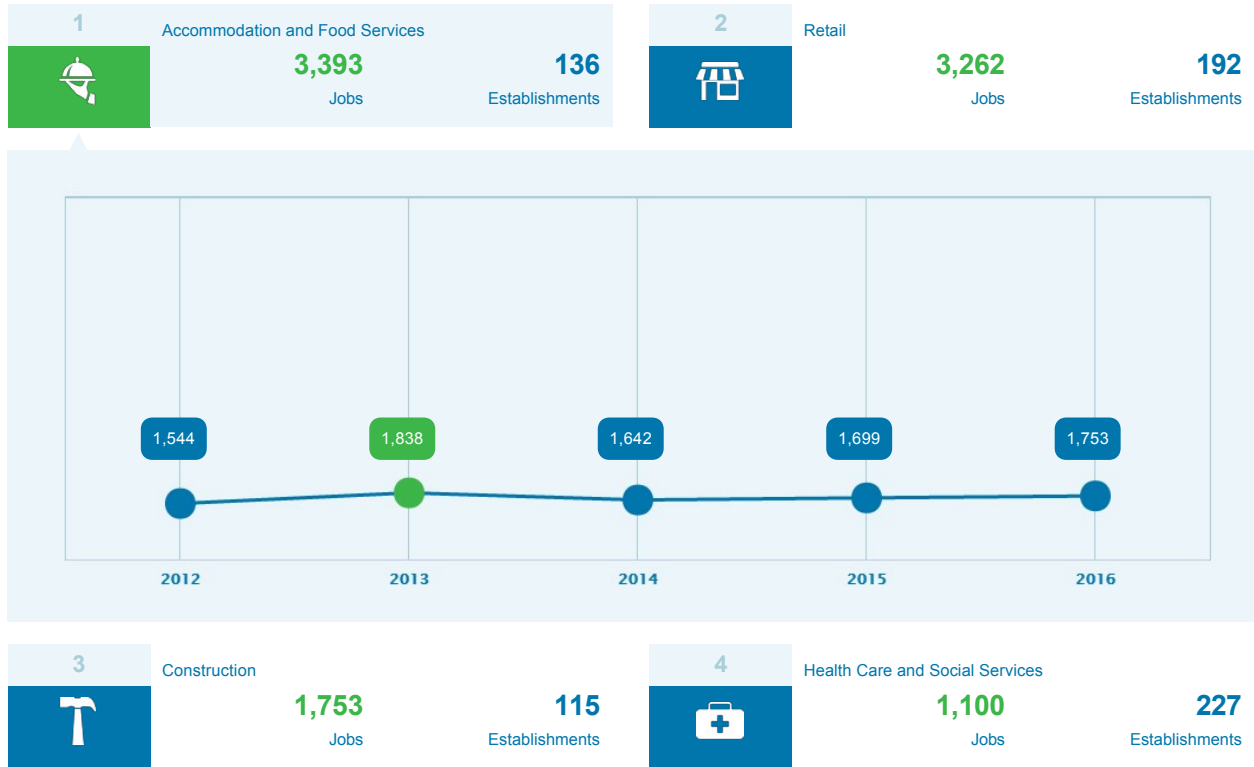
1,448



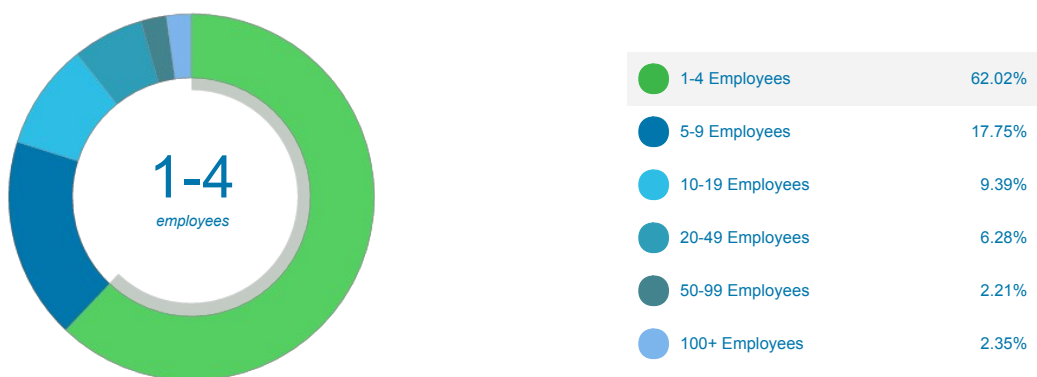
## Businesses and Jobs

Marana has a total of 1,448 businesses. In , the leading industries in Marana were Construction, Retail, Health Care and Social Services, and Accommodation and Food Services.

Which are the top Industries by jobs?

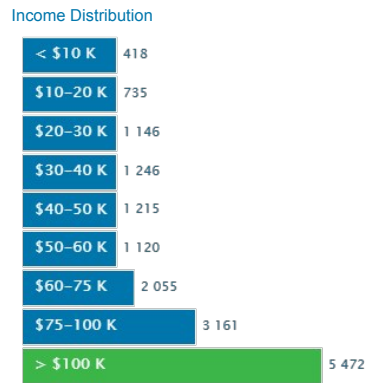
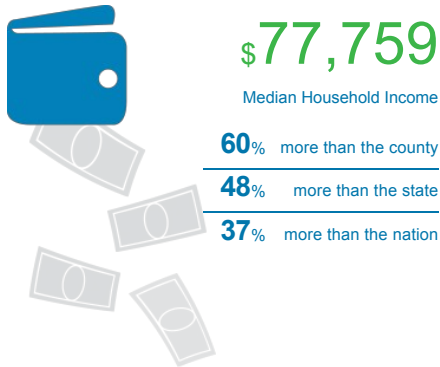


How many employees do businesses in Marana have?

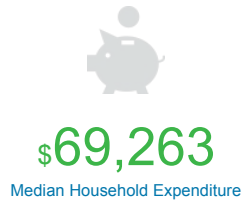


## Income and Spending

Households in Marana earn a median yearly income of \$77,759. 64.51% of the households earn more than the national average each year. Household expenditures average \$69,263.00 per year. The majority of earnings get spent on Shelter, Transportation, Food and Beverages, Health Care, and Utilities.



### How do people spend most of their money? PER HOUSEHOLD



## Transportation

Residents spend an average of 27.00 minutes commuting to work. Marana is served by 9 airports within 50 miles. Rail can be accessed within . Interstates can be accessed .



**27.00**min

Commute Travel Time



**10**(+50 miles)

Airports in Community



**Interstate**

In Community



**Freight Rail**

In Community

## Taxes

Top State Corporate Income Tax

**6.00%**

Top State Personal Capital Gains Tax

**4.50%**

Top State Corporate Capital Gains Tax

**6.00%**

State Sales Tax

**5.60%**

Top State Personal Income Tax

**4.54%**

The image shows a Google Maps interface with a popup window for Marana, Arizona. The popup contains the following data:

- Population:** 40,683
- Labor Force Size:** 20,088
- Bachelors Degree or Higher:** 39.18%
- Household Median Income:** 76,912
- Commute Travel Time:** 27

Navigation options in the popup include: Save to folder, Full Report, Labor Force Report, Demographics Report, Consumer Spending Report, Wages Report, Talent Pool Report, and Housing Report.

The background map shows Tucson, Arizona, with labels for various areas like Marana, Oro Valley, Catalina Foothills, and Saguaro National Park. Major highways like I-19 and I-10 are visible.